



Portalok 7s

Ultrasonic Flowmeter

- . Outdoors, Harsh Environments, Sun and Rain
- . Longer Lasting Battery Power
- . Simple to use
- . Any Pipe or Liquid

Degree of Protection IP68	Built-in DATA LOGGER
Weight 3 Kg.	Resolution 0.025 cm/s

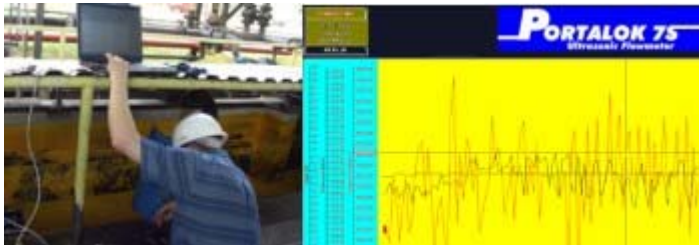
ADVANTAGES

- Weatherproof Flowmeter and sensors
- Dual Mode Transit Time and Doppler
- Very user friendly
- No cutting of pipes
- No shutting down of process
- Affordable
- Lightweight and easily transportable
- Quick response
- Integral data logging
- Current & Binary Output
- Extended battery management system

FEATURES

- Fully weatherproof IP 68 rated Flow Computer, connectors and sensors. 60,000 point built in datalogger, analog output, backlit LCD displaying flow and total ,RS 232 and 5 M cable as standard
- Extremely easy to install clamp-on sensors with no process interruption. Advanced signal transmission Non-invasive flow measurement of liquids, no pipeline disturbance, no pressure loss.
- Suitable for all commonly used pipe materials and all sonically conductive liquids
- Measurements in imperial or metric units
- With improved signal transmission the standard sensors cover a wider range from DN 10... DN 2500 mm (1/2"... 98")

OVERVIEW



This portable device has been designed to meet the practical short and long term needs of the Service/Maintenance and Commissioning Engineer wishing to check the flow rate of liquids at different locations in a distribution or a process. The Portalok is sent to you as a complete system ready to measure any liquid in any pipe.

Many clients worry about using an instrument that can easily be damaged by harsh environments , the battery running out or simply that the instrument will not work. EESIFLO have produced the Portalok 7S with this in mind and have weather protected sensors, cable and transmitter.

The setup of the unit is simple and user friendly and can obtain the required flow information in minutes. Everything required for a flow measurement is shipped with the Portalok 7S Flow kit.

Specifications and Ordering Information.

The standard EESIFLO Portalok 7S is sold and supplied as a complete kit ready for measurements on all types of metal or plastic pipes

Ordering Information/Kit Mdl Number

EESIFLO Portalok 7 S Weatherproof Transit time/Doppler Portable Flowmeter Kit suitable for measurements on pipes between DN 10... DN 2500 mm (1/2"... 98") from -30°C to 100°C (22°F to 212°F) with built in 4-20mA output, Binary outputs, 60,000 point datalogger, RS 232 port, cable and Windows Software . 110/220 VAC Wall mount battery charger, 5 M sensor cable, pipe clamping fixtures, ultrasonic couplant bottle, measuring tape , calculator and manual.

SPECIFICATIONS

Measurement Technology:	Ultrasonic time difference correlation principle and doppler
Flow velocity:	(0.01...25) m/s (0.003 to 82 ft/s)
Resolution:	0.025 cm/s (0.0008 ft/s)
Repeatability:	0.25% of reading \pm 0.02 m/s (0.06 ft/s)
Accuracy:	(for fully developed, rotationally symmetrical flow profile)
- Volume flow:	\pm 1% ..3% of reading \pm 0.02 m/s(0.06 ft/s) depending on application
Measurable fluids:	\pm 0.5% of reading \pm 0.02 m/s (0.06 ft/s)with process calibration all sonically conductive fluids with < 10% gaseous or solid content in volume
Recommended Pipe Measuring range:	P Type Sensors DN10 to 1000mm (1/2 inch to 40 inch) M Type Sensors DN50 to 2500mm (2 inch to 98 inch)

NOTE: Sensors are sold in pairs and are potted with a 5 M cable to ensure they are watertight. Electronic connectors are rated IP 68 and the sensors are also potted into the connector.

Electronics Enclosure

Enclosure	
- Weight:	3 kg (6.6 lbs)
- Degree of protection:	Designed to IP68
- Material:	High density Polyethylene (Weatherproof and crushproof)
Measuring channels:	1
Power supply:	(100-240) VAC
Battery Operation:	24 hour usage on full charge.
Display:	2 x 16 characters, dot matrix, backlit
Electronics Operating temperature	-10°C...60°C (14 °F to 140 °F)
Sensor Operating Temperature	-30°C...120° up to 150 °C for short periods
Power consumption:	< 10 W
Signal damping:	(0...100) s, adjustable
Measuring cycle:	(100...1000) Hz (1 channel)
Response time:	1 s (1 channel)

Measuring functions

Quantities of measurement:	Volume , flow rate, flow velocity
Totalizers:	Volume
Built in Datalogger	Approx. 60,000 values
Operating languages:	English